



## St. Patrick's Parish School

THE EDUCATIONAL MINISTRY  
OF ST MICHAEL'S PARISH  
IN TRUNDLE

1 Austin St, Trundle NSW 2875

Ph. 02 6892 1073

admin.trundle@wf.catholic.edu.au



St. Patrick's School is a welcoming Catholic Educational Community that celebrates the individuality of each of its members and fosters in our students the courage to know, seek and live the truth as global citizens.

In partnership with parents and the Parish Community, we offer Jesus as the model and means of life.



Term 4 Week 1, 13th October 2020

## Dear parents and friends,

Welcome to Term 4! It was wonderful to welcome our students and staff yesterday morning. Everyone looked well rested and ready for the many challenges and opportunities which we will meet during this term. Many of the Covid-19 health restrictions still apply in schools. Parents and visitors are still not allowed at school except at the Administration Office.

We have a very important day for St Patrick's Parish School this Wednesday. Catholic Schools NSW staff are visiting us on Wednesday afternoon. They will be interviewing some students and staff and filming our school. They will be gathering footage for a World Teachers Day feature and also a summary of the 2020 School Year during Covid-19. We are very honoured to be chosen as the face of 'Small Schools' for the promotion.

There's great news for our 2021 Kindergarten students. The latest guidelines from NSW Health allow schools to have Kindergarten Orientation Programs. These are allowed to operate from 1st November, 2020. We will commence our program on the following Tuesday, 3rd November, 2020. Details of the program are included in this newsletter. I have also sent specific details to our families who have enrolled children for Kindergarten 2021.

Sister Pat sends all our families her warm wishes for the beginning of the school term. Her health continues to improve during her recuperation at Southern Cross Care in Parkes.

Please remember, that if you have any concerns or questions regarding your child or the daily routines of the school, staff are always happy to assist. Call the School Office between 8.30am and 3.30pm to ask a question or make an appointment to meet with your child's teacher.

God's blessings,  
**Mrs Trish Cleal** Principal

**A GREAT PLACE TO GROW;**

- spiritually,
- academically,
- physically, &
- emotionally

**KINDERGARTEN ENROLMENTS OPEN!**

More than just a great education, give your child the **BEST START!**

**ST PATRICK'S PARISH SCHOOL TRUNDLE**

Contact St Patrick's Parish School on (02) 6892 1073 to order your child's enrolment package, and we will arrange to post it out to you.

St Patrick's Parish School has been providing education in Trundle for 96 years and we certainly have a bright future. We continue to provide a choice of a quality, faith-based education for the families of Trundle.

At St Patrick's Parish School, your child will be part of a nurturing community-minded school, promoting a positive, safe and supportive learning environment.

Follow us on facebook @ St. Patrick's Parish School Trundle NSW Parents And Friends

St Patrick's Parish School  
1 Austin Street,  
TRUNDLE NSW  
www.wf.catholic.edu.au

For further information contact:  
PH: (02) 6892 1073  
Email: principal.trundle@wf.catholic.edu.au

New students will attend **ORIENTATION SESSIONS** over 5 Tuesdays during Term 4.

Let us pray that we will grow in love. God, who gave us the command to love you and one another, by this love prepare us for eternal life.  
Through Christ our Lord. Amen.



### SELF-SERVE COMPASS KIOSK

The Compass Kiosk, located at the Office, is an easy-to-use touch-screen unit that integrates seamlessly with the school's attendance system.

Sign in/out is required for:

Leaving school during school hours

Late arrival of students

Visitors & volunteers

## Important dates

**THURSDAY  
15 OCTOBER**

Mass @ 12 noon  
St Michael's Church

**THURSDAY  
22 OCTOBER**  
NO MASS

## Year 7: 2022

### ARE YOU ARE PLANNING ON SENDING YOUR CHILD TO A SELECTIVE HIGH SCHOOL IN 2022?

For selective schools, including Farrer, Hurlstone, James Ruse and Yanco Agricultural High Schools, applications must be made online between 13 October 2020 and 16 November 2020.

See the flyer at the end of this newsletter for more information,



### PIES, DONUTS & SAUSAGE ROLLS!

Due to popular demand, our P+F will be running another pie drive from the yummy bakery in Condo. The order form is attached to this newsletter and due back in by **THIS** Wednesday, 14 October.

## Medication in schools

### Antibiotics

In the case of antibiotics, generally a written request from a parent to the school in relation to the administration of antibiotics will be sufficient. Staff should be aware that some antibiotics require refrigeration.

### Over the Counter Medication

Over the counter medication including analgesics or homoeopathic preparations must not be administered by school staff unless a written request is received from the student's parent and is accompanied by written advice from a medical practitioner with the medication in the original labelled container. The exception is reliever puffers for the emergency treatment of asthma.

Parents are responsible for:

- Obtaining the relevant medication forms from the school and arranging for their completion and return
- Providing the medication in the original labelled container to the nominated staff member
- Ensuring the medication is not out of date and has an original pharmacy label with the student's name, dosage and time to be taken
- Providing a request by parents and written instructions from a medical practitioner for medication that is not obtained on prescription, indicating:  
Name of student, Condition for which the medication is required,  
Guidelines for administration



## THINKING OF ORDERING COOK BOOKS?

The P+F will be placing an order for a reprint of our beautiful SOLD OUT cook book very soon. If you intend to purchase a copy or 2 for Christmas, please let us know now so we order enough copies for everyone. Thank you!

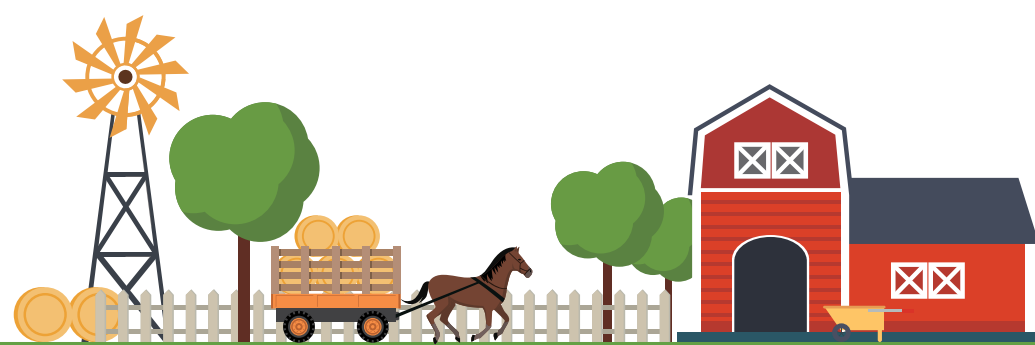


## Swimming lessons

The Royal Life Saving Swim & Survive intensive lessons are on again this year at Trundle pool and bookings go live on October 1!

For more information, and to book, go to <http://royalnswh.com.au/SWIM-AND-SURVIVE>





## Infants: Sustainable farm life

Our infants class, and their families, were very busy last term creating dioramas depicting 'sustainability in agriculture' for geography and science. We have seen so many ideas! A range of materials were used in the creation of the farms, sheep had real wool and the silos contained wheat. Some farms had solar panels, one had a mill with a water-turning wheel, one decided to embrace farm stays and tourism. One had centre pivot irrigation and a gold mine! Diversity was most popular with large silos, water tanks, multiple crop and stock types. Students were also given the option of creating farms with Minecraft and produced some amazing maps. Well done infants families!



## Students of the Week

TERM 3 WEEK 10 AWARDS



INFANTS

**Isabella Skipworth**

for her results in Spelling tests this term.



PRIMARY

**Freya Berry**

for her identification and accurate recording of lines of symmetry in shapes.



SPORT

**Marcus Collins**

for his throwing skills.





MAKING JESUS REAL

MJR Award



**James Smith**

for using his manners  
when dealing with others.

Primary  
MJR Dohbing

Chayse for being a good friend.

All of the people who looked  
after me when I was hurt.

Thursday Mass

Thursday Masses are held  
fortnightly in St Michael's Church  
on Thursday at 12 noon.

Everyone is welcome to attend,  
following social distancing.



Parish  
Mass Times

**ST MICHAEL'S TRUNDLE**

Sunday, October 18 @ 10am

**ASSUMPTION TULLAMORE**

Sunday, October 18 @ 8am





**MAKING JESUS REAL (MJR)**

## Team work at home!

Often we are asked to do a small job by our parents or teachers, and often we moan and groan and think we will do it later – like after the TV show or the game we are playing. Often parents or teachers then get annoyed.

When we operate out of EAST (Exclude, Argue, Sulk, Talkback), we produce tension in the home and classroom.

Teamwork At Home, with the emphasis on teamwork, produces a calm and happy home.

If you are positive and say 'ok' and go to do the job, you feel good, you don't have to worry about doing it later and your parents and teachers are pleased that they don't have to remind you.

### Some ideas for you to try:

- Clean up after meals.
- Put away your toys and books without being asked to do so.
- Thank your family for cooking or washing your clothes.
- Ask your parents what jobs they need help with before they ask you!





## HAVE YOU CLAIMED YOUR CREATIVE + ACTIVE KIDS VOUCHER?

Did you know your child can receive **2 x \$100 vouchers** towards activities of their choice?

Claiming and redeeming your vouchers is easy, follow the steps below to get started.

Claim your vouchers from the Service NSW website:

[www.service.nsw.gov.au/transaction/apply-active-kids-voucher](http://www.service.nsw.gov.au/transaction/apply-active-kids-voucher)

[www.service.nsw.gov.au/transaction/apply-creative-kids-voucher](http://www.service.nsw.gov.au/transaction/apply-creative-kids-voucher)

Locate a provider and find out when they are accepting registrations.

Use your vouchers when registering for a sport or activity and get playing!

## WHEN TO USE THE VOUCHERS

Vouchers can only be used once but each child is eligible for two vouchers each year and you can use them any time from now until 31 December.







# Kindergarten

## ORIENTATION PROGRAM 2020

Children will need to wear enclosed shoes. They will need to have a sun hat. Their drink bottles, lunch boxes, back packs, etc, will need to be clearly labelled.

### Tuesday 3rd November

9.00am-11.10am

*Bring a packed fruit break, morning tea and drink bottle.*

### Tuesday 10th November

9.00am-1.00pm

*Bring a packed fruit break, morning tea and drink bottle.*

### Tuesday 17th November

9.00am-1.00pm

*Bring a packed fruit break, morning tea and drink bottle.*

### Tuesday 24th November

9.00am-3.15pm

*Bring a packed fruit break, morning tea, lunch and drink bottle.*

There will be a parent information meeting Tuesday 24th November, from 2.00pm-3.00pm.

*We are looking forward to seeing you there!*



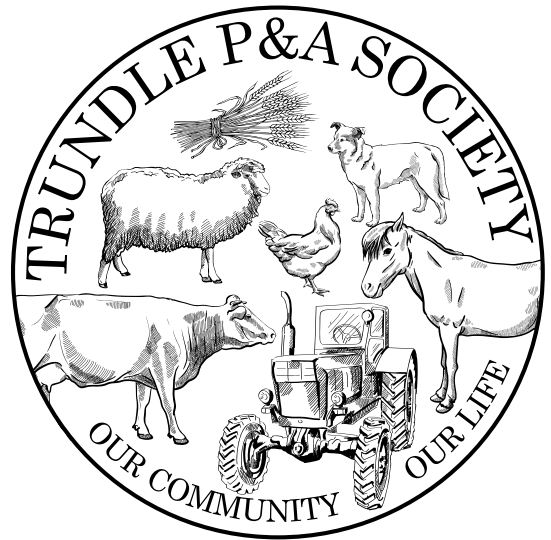
# AGM notice

The Annual General Meeting of the Trundle P&A Society will be held at the Trundle Services Club

on **Wednesday 21 October at 7:00pm.**

All positions will be declared vacant.

All members are invited to attend.



## TRUNDLE BRANCH

The Trundle Auxiliary raises funds for the purchase of items needed at the Trundle MPS for the comfort of patients and residents. We also purchase gardening equipment and plants.

Our meetings are usually held monthly at the MPS. Due to the current situation we have been holding our meetings in members homes.

### WE WELCOME ALL NEW MEMBERS.

Our next meeting will be 19th October at 2.30pm

Please contact Carol Schneider, secretary, on 0402 548 245 for further information.

## Trundle Amateur Swimming Club AGM

The Trundle Amateur Swimming Club will hold their Annual General Meeting on Friday the 16th October at 3.30pm at the RSL.

On conclusion of the AGM a general meeting will be held to discuss starting date and prices.



**Trundle  
Swim Club**









OUTDOORS  
NON-CONTACT

# HAVE A BLAST!

GET INTO WOOLWORTHS CRICKET BLAST. IT'S A FUN AND ACTIVE PROGRAM FOR KIDS OF ALL ABILITIES – WHETHER IT'S YOUR FIRST TIME WITH A BAT OR YOU'RE A BACKYARD CRICKET STAR!

Trundle Cricket Club

Thursday afternoons 4:30-5:30pm

Held at Trundle Central School, Trundle

Any questions, call

Matt Randall: 0428642474 or Jono Sanderson: 0428975335



JOIN A CREW NEAR YOU TODAY



PLAY CRICKET



OFFICIAL KIDS  
PROGRAM



## HAVE A BLAST. BE PART OF THE CREW!

Get into Woolworths Cricket Blast. It's a fun and active program for kids of all abilities – whether it's your first time with a bat or you're a backyard cricket star!

- ✓ It's easy to join a crew and make awesome new friends.
- ✓ Wear the colours of your Big Bash heroes.
- ✓ Parents warm up, you can join in too!
- ✓ Outdoors, non-contact.

### JUNIOR BLASTERS

AGES 5-7 | 60 MINS | 6+ WEEKS

Learn new skills, including catching, throwing and teamwork, through fun game based activities.

Sign up now for your Starter Pack. Returning Junior Blasters score a Returner Pack with a Backpack, Ball and choice of bonus item!



STARTER KIT



RETURNER KIT

### MASTER BLASTERS

AGES 7-10 | 90 MINS | 6+ WEEKS

Everyone gets a chance to bat, bowl and field in short, modified games of cricket. For kids with basic cricket skills.

Sign up now for your Master Blasters Pack!



Trundle Cricket Club

Thursday afternoons 4:30-5:30pm

Held at Trundle Central School, Trundle

Any questions, call

Matt Randall: 0428642474 or Jono Sanderson: 0428975335



JOIN A CREW NEAR YOU TODAY



PLAY CRICKET



OFFICIAL KIDS  
PROGRAM



JOIN A CREW NEAR YOU TODAY



PLAY CRICKET



OFFICIAL KIDS  
PROGRAM





# ST PATRICK' PARISH SCHOOL

## 2020 Pie Drive

### Family pies

	PRICE PER PIE	QUANTITY	TOTAL
Plain pie	\$16.00		
Potato topped meat pie	\$16.00		
Curry chicken pie	\$16.00		
Chicken pie	\$16.00		
Curry pie	\$16.00		
Mushroom pie	\$16.00		
Cheese & bacon pie	\$16.00		
Outback Lamb pie	\$20.00		
Apple pie	\$16.00		
Apricot pie	\$16.00		
Chunky pepper steak pie	\$16.00		
Chunky cheese & bacon pie	\$16.00		

### PAYMENT OPTIONS

Email order form to:

admin.trundle@wf.catholic.edu.au

☐ **Cash**

*delivered to St Pat's office*

☐ **Cheque**

*made out to St Patrick's P & F*

☐ **Direct debit**

**Account:** St Patrick's School P & F

**BSB:** 802 884

**Account no.:** 9041714

**Reference:** surname

Name \_\_\_\_\_

Address \_\_\_\_\_

Phone \_\_\_\_\_

### PLEASE NOTE

No orders will be taken without payment.

Orders due to school by  
**14 October, 2020.**

Pies will be delivered to school on  
**30 October, 2020.**

No bags needed, Condo Bakery will individually pack orders.

### Dozen pies

	PRICE PER PIE	QUANTITY	TOTAL
Mince plain pie	\$48.00		
Mince cheese & bacon pie	\$48.00		
Mince curry pie	\$48.00		
Chicken pie	\$60.00		
Curry chicken pie	\$60.00		
Outback lamb pie	\$72.00		
Apple pie	\$60.00		
Cherry pie	\$60.00		
Apricot pie	\$60.00		
Sausage Rolls	\$42.00		

### Donuts

	PRICE PER PIE	QUANTITY	TOTAL
Single Cinnamon Donut	\$1.00		
Jam Donut	\$3.50		
Iced Ring Donut	\$3.50		
<b>TOTAL ORDER</b>			





**TRUNDLE GOLF CLUB  
INVITES  
ALL PLAYERS AND  
MEMBERS OF THE  
COMMUNITY TO THEIR**

# **2020 PRESENTATION DINNER**

TRUNDLE GOLF CLUB

**SATURDAY 24TH**

**OCTOBER 2020**

**6.00PM FOR 6.30PM**

**\$40 PER PERSON**

**2 COURSE MEAL**  
CATERED BY **TRUNDLE HOTEL**

**DRESS SMART**

**BOOKINGS BY 18 OCT**  
**NUMBERS STRICTLY LIMITED TO**  
**60 DUE TO COVID-19**

**Payment with booking  
essential**

**Please book at  
Trundle Services and  
Citizens Club**



Trundle Golf Club  
**THANK YOU  
TO SPONSORS' DAY  
SEASON CLOSING DAY**

**SUNDAY 18 OCT  
3 PERSON AMBROSE**

**Sign in from 11.30  
Tee off from 12  
3 Person Ambrose  
18 holes**

**LADIES, MEN, JUNIORS  
ALL WELCOME**

**PARTNER CAN BE ORGANISED**

**COVID-19 RESTRICTIONS APPLY Members and**

**guests welcome  
\$10 includes golf &  
barbecue after  
the game**

**Chipping comp**

Please contact Sam 0447 124 055  
by 5pm Frid 16 to register



# ST PATRICK'S SCHOOL COOKBOOK



## Order yours today!

OVER 215 RECIPES • QUALITY PRINTING IN FULL COLOUR • ALL STUDENTS FEATURED

**PAYMENT OPTIONS** Email order form to: [stpatcook2020@gmail.com](mailto:stpatcook2020@gmail.com)

☐ Cash ☐ Cheque (made out to St Patrick's P & F) ☐ Direct debit

Account: St Patrick's School P & F BSB: 802 884 Account no.: 9041714 Reference: surname

Name: \_\_\_\_\_ Phone: \_\_\_\_\_

Address: \_\_\_\_\_

Number of books ordered @ \$30 each: \_\_\_\_\_ ☐ Postage required

Books will be available in October to be collected from the school office.

If postage is required, please add \$10 per book. No orders will be taken without payment.





# St Patrick's School Trundle

## Covid-19 Term 2 Return to School Learning Health and Safety Protocols

Hygiene	
<b>Hand washing</b> is the most important defence in stopping the spread of infection.	<ul style="list-style-type: none"> <li>Students will wash their hands thoroughly with soap and water, for at least 20 seconds;             <ul style="list-style-type: none"> <li>On arrival to school</li> <li>Before and after eating</li> <li>At the end of each break</li> <li>After toileting</li> </ul> </li> <li>Hand sanitiser will also be made available in every occupied room and used when soap/water are not available.</li> <li>Any adult entering the school must do so via the School Admin Office and use the hand sanitiser provided.</li> </ul>
<b>Respiratory hygiene:</b>	<ul style="list-style-type: none"> <li>Students must cover coughs and sneezes with elbow or arm or using a tissue and disposing of it immediately.</li> <li>If a student coughs or sneezes onto a surface, the surface will be cleaned immediately with disinfectant.</li> <li>Students will be taught to avoid touching their face, especially eyes, nose and mouth.</li> </ul>
<b>Food and drink:</b> There can be <b>NO</b> sharing of food or drink amongst students	<ul style="list-style-type: none"> <li>Students will need to <b>bring their own fruit</b> for Fruit Break.</li> <li><b>The bubblebers will be closed.</b> The school will have some water bottles for students if they forget to bring one from home. That bottle will remain at school.</li> <li>There will be <b>no shared birthday cakes/cupcakes.</b></li> </ul>

<b>First Aid/Sick Bay:</b>	<ul style="list-style-type: none"> <li><b>Students who are unwell cannot remain at school.</b></li> <li>Staff will use appropriate PPE (gloves, apron, mask) when dealing with any blood or bodily fluids.</li> <li>Staff will use non-contact thermometers to take temperatures.</li> </ul>
Environmental Cleaning	
<b>High touch classroom surfaces: doorknobs, benchtops and desks</b>	<ul style="list-style-type: none"> <li>These surfaces will be sprayed with hospital grade disinfectant and water solution             <ul style="list-style-type: none"> <li>During recess and lunch breaks</li> <li>At the end of the school day</li> </ul> </li> </ul>
<b>High touch areas in toilets: cisterns, taps, doorknobs</b>	<ul style="list-style-type: none"> <li>These surfaces will be sprayed with hospital grade disinfectant and water solution             <ul style="list-style-type: none"> <li>after recess and lunch breaks</li> <li>At the end of the school day</li> </ul> </li> </ul>
<b>Outdoor lunch seats, handrails and playground equipment:</b>	<ul style="list-style-type: none"> <li><b>The playground equipment will be closed</b></li> <li>Lunch seats and handrails will be sprayed with hospital grade disinfectant and water solution             <ul style="list-style-type: none"> <li>after recess and lunch breaks</li> </ul> </li> </ul>
Social Distancing	
<b>Dropping Off and Picking Up students</b>	<ul style="list-style-type: none"> <li>Parents cannot walk into the school grounds when dropping children off in the morning.</li> <li>Parents can only come to the School Admin. Office.</li> <li>Parents must avoid gathering in groups when collecting their students after school.</li> </ul>

# Placement in selective high schools for Year 7 entry

# in 2022

## Information for applicants

Thinking of applying for  
a government selective  
high school for Year 7  
in 2022?

You must apply online at:

[https://education.nsw.gov.au/  
public-schools/selective-high-  
schools-and-opportunity-  
classes/year-7](https://education.nsw.gov.au/public-schools/selective-high-schools-and-opportunity-classes/year-7)



### Key Dates

Application website opens: **13 October 2020**

Application website closes:

**16 November 2020**

You must apply before this date.

Test centre and test authority advice

released: **25 February 2021**

Selective High School placement test:

**11 March 2021**

Placement outcome information released:

**2 July 2021**

**Please read this booklet carefully before applying.**

[https://education.nsw.gov.au/public-  
schools/selective-high-schools-and-  
opportunity-classes/year-7](https://education.nsw.gov.au/public-schools/selective-high-schools-and-opportunity-classes/year-7)

---

**From this year, you will be able to log into your application to send and receive messages and notices.**

---

There may be changes to the procedures in this document. Check the website at [education.nsw.gov.au/shs-oc](https://education.nsw.gov.au/shs-oc) regularly for updates throughout the application and placement process.

The Selective High Schools placement process for Year 7 entry is administered by the High Performing Students Team. It is referred to as 'the Team' in this document.

### Contact Details:

High Performing Students Team, NSW Department of Education  
Email: [ssu@det.nsw.edu.au](mailto:ssu@det.nsw.edu.au)  
Telephone: 1300 880 367  
Postal Address: GPO BOX 33, SYDNEY NSW 2001

Facebook:

[https://www.facebook.com/groups/  
772251106301086/](https://www.facebook.com/groups/772251106301086/)





TRUNDLE RUGBY LEAGUE  
FOOTBALL CLUB

AGM

WEDNESDAY 28TH OCTOBER 7PM  
TRUNDLE HOTEL

ALL POSITIONS  
VACANT

**POSITION AVAILABLE**

# School bus driver

Must be reliable, honest, punctual + good with kids

Training + qualifications not essential and  
can be assisted upon approval



**PLEASE PHONE TROY ON 0499 550 082**

# Student Absenteeism Process - Primary

Monitor and respond to student absence  
Class Teacher or nominated administrator:

- informs the Principal or nominated leader of emerging absenteeism
- follows up unaccounted absences by the end of the school day or as soon as possible

Principal and or nominated leader:

- generate Student Attendance Summary Reports fortnightly
- analyse absences and decide whether it is an issue of emerging absenteeism

Process 1: Emerging absenteeism (< 90%) identified\* -

- Parent informed of attendance concern
- send Letter 1 and / or contact parents by phone

\* absenteeism is identified by attendance rate and where patterns of attendance cause concern

Regular attendance  
not restored

Parent does not attend APM within 2 school weeks and regular attendance not restored

- send Letter 2 Request to attend APM
- school continues to contact the parents by phone to set an APM date
- send Letter 2a by registered post

Process 3: Complex absenteeism (<70%) - Wellbeing Team Attendance Support

- Principal or nominated leader completes an Wellbeing Team - Attendance Support Referral form
- Principal sends Letter 3 to parent / carers advising of Attendance Support referral
- CEDP Wellbeing Team- Attendance Support investigates case, supports school to initiate an attendance planning meeting, develop a student attendance plan and review attendance plan within 20 days

Process 4: Complex absenteeism (<70%) - CEDP Attendance Conference

- Principal in consultation with Attendance Coordinator determine to proceed with an Attendance Conference
- Attendance Coordinator organises a CEDP Attendance Conference
- Principal sends Letter 4 to parent / carers
- Attendance Coordinator sends Letter 5 to parent / carers
- Principal or nominated leader attends CEDP Attendance Conference
- Principal or nominated leader monitor compulsory schooling undertakings
- Principal or System Counsellor makes ROSH report every 10 school weeks (minimum) until resolved

Process 5: Parents have not attended Attendance Conference or have not complied with undertakings  
Attendance Coordinator in consultation with Principal and Head Student Services determine:

Option A - referral to DEC legal services for consideration of legal action. CEDP sends Letter 6

Option B - continued attendance case management

Option C - exclusion process / abandoning the enrolment contract between the school and parent / student  
Head student services recommends and Executive Director approves



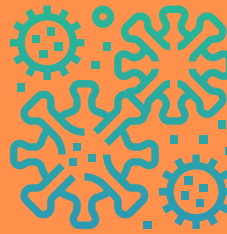
Revised - December 2018

every learner every day





# WHEN A STUDENT OR STAFF MEMBER IS UNWELL WITH FLU-LIKE SYMPTOMS



## SEND HOME ASAP IF UNWELL

Students or staff showing signs of being unwell must be sent home ASAP.



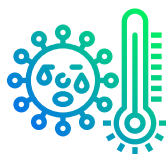
## REMAIN IN AN ISOLATED SPACE UNTIL COLLECTED

Schools must maintain an isolation room for persons showing symptoms of COVID-19 while they await collection.



## NEGATIVE COVID-19 TEST REQUIRED BEFORE RETURN

- Students absent or sent home due to flu-like symptoms need to be tested.
- Staff and students must not return to school or work until they return a negative COVID-19 result (to be sighted by the school ) & are symptom free.



## ENCOURAGE EARLY TESTING IF DISPLAYING FLU-LIKE SYMPTOMS

Students and staff are encouraged to get tested as soon as possible if they display flu-like symptoms.

## IDENTIFYING THE SYMPTOMS

### COMMON

- Fever
- Cough



### SOMETIMES

- Sore throat
- Shortness of breath
- Fatigue
- Aches & pains
- Headaches
- Runny or stuffy nose

**A GREAT PLACE  
TO GROW;**

- **spiritually,**
- **academically,**
- **physically, &**
- **emotionally**

# **KINDERGARTEN ENROLMENTS OPEN!**

**More than  
just a great  
education,  
give your  
child the  
BEST  
START!**



**ST PATRICK'S  
PARISH SCHOOL  
TRUNDLE**

**Contact St Patrick's Parish School on  
(02) 6892 1073 to order your child's enrolment  
package, and we will arrange to post it out to you.**

St Patrick's Parish School has been providing education in Trundle for 96 years and we certainly have a bright future. We continue to provide a choice of a quality, faith-based education for the families of Trundle.

At St Patrick's Parish School, your child will be part of a nurturing community-minded school, promoting a positive, safe and supportive learning environment.



**Follow us on facebook  
@ St. Patrick's Parish  
School Trundle NSW  
Parents And Friends**

**St Patrick's  
Parish School  
1 Austin Street,  
TRUNDLE NSW  
[www.wf.catholic.edu.au](http://www.wf.catholic.edu.au)**



**For further information contact:  
PH: (02) 6892 1073**

**Email: [principal.trundle@wf.catholic.edu.au](mailto:principal.trundle@wf.catholic.edu.au)**

**New students  
will attend  
ORIENTATION  
SESSIONS  
over 5 Tuesdays  
during  
Term 4.**